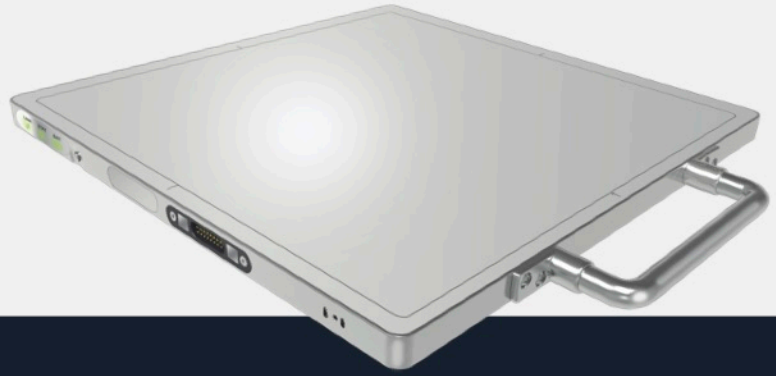


Wired/Wireless Portable FPD

# 2925A



**PZ MEDICAL**  
品臻影像

## Core Technologies

**Portable**

- Ultra Slim, Ultra Light, Wireless
- Anti-Water, Anti-Drop, Anti-Theft
- Longest Battery Standby Time

**Reliable**

- Work in The Toughest Environments
- Meet Rigorous Medical Requirements
- Own Super Reliable Communication Protocol

**Durable**

- Design Rigorously
- One-key Calibration
- Service Remotely

**Universally Adaptable**

- Powerful Fundamental Design
- Deep Understanding of X-ray App
- Flexible Configurations For All App

**Highly Efficient**

- High Speed Wifi Transmission
- 10 Million Pixel Within One Second

**AED**

- Fast Response
- High quality Image
- Patented Technologies
- Automatic Exposure Synchronization

## PRODUCT INTRODUCTION

CSI/GOS

140μm

2048×1792

16bit

65536 Grey Scales

Type 2925A is a 12\*10 inches wireless detector with features of light weight ,cassette size and portable. Unique wireless communication protocol ensures fast and reliable transmission of a full resolution image within 2 seconds, and no more than 5 seconds even in the worst environment. The detector output high quality images with high DQE and resolution. Equipped with highly sensitive AED function, it is easily synchronized with any type of generators.

# ENLIGHTEN THE WORLD

## DESCRIPTIONS

## SPECIFICATIONS

Detector Technology	a-Si
Scintillator	GOS/CSI
Image Size	29×25cm(12×10in)
Pixel Matrix	2048×1792
Pixel Pitch	140μm
A/D Conversion	16bit
Minimum Detectable Dose	20nGy(GOS) 14nGy(CSI)
Maximum Linear Dose (RQA5)	150μGy(GOS) 110μGy(CSI)
Ghost(300μGy,60s)	<0.25%
Spatial Resolution	3.6LP/mm
Image Acquisition Time	1s(Wired)/2s(Wireless)
X-ray Voltage Range	40-150KV
Battery Standby Time	4H
Data Interface	GigE/802.11ac
Power Dissipation	20W
Adapter Input	AC100-240V,50-60Hz
Adapter Output	DC 24V,60W
Dimensions	31.5×30.4×1.5cm(Wireless)
Dimensions	31.5×27.8×1.5cm(Wired)
Weight	2.1kg(Wireless)/1.9kg(Wired)
Housing Material	Carbon,Alloy
Water Tightness	IPX3
Operating Environment	5-35°C,10-75% RH

## OUTLINE DRAWING (Wireless)

